





# EXECUTIVE SUMMARY





# Economic and Energy Security Overview of EU-Russia Economic Relations





*Beneficial Outcomes of the Economic Partnership*



## International Security: Overview of EU-Russian Approaches to International Affairs











# In Defense of EU-Russia Partnership in the International Sphere

*Beneficial Outcomes*





Kuczy ska







## WORKS CITED

*European Financial Management*





*Strategic Studies Institute and U.S. Army War College Press*

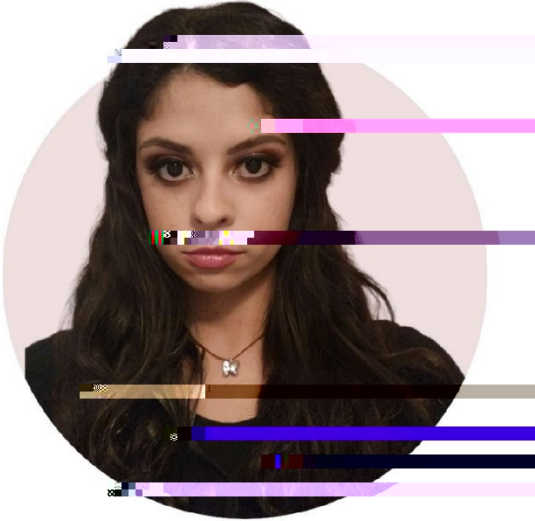
*Review of International*

*Studies*



## ABOUT THE AUTHOR

Denitsa Raichkova Pena



## ABOUT THE GLOBAL POLICY HORIZONS RESEARCH LAB

Webster University's Global Policy Horizons Lab is a policy-focused research entity where students, researchers, affiliated faculty, as well as members of the policy community across disciplines can explore national and global security issues, generate original research, as well as produce peer-reviewed policy papers and commentaries. The Lab pursues innovative research focusing on unconventional threats, identity and security, role of technology in security, economic security, as well as environmental and food security. The goal of the Lab is to become a knowledge hub that informs regional governments and other members of the global policy community on contemporary and future security challenges.

The current Director of the Lab is Professor Dani Belo, PhD.